

Introductory Overview for Members



Association of American Universities Data Exchange

About AAUDE

Organized in 1974 by institutional research officers from AAU universities with the support of their presidents, **Association of American Universities Data Exchange** (AAUDE) is a data-sharing consortium comprising distinguished research universities. AAUDE's institutional representatives come primarily but not exclusively from offices of institutional research. AAUDE makes accessible information to inform decision-making within member institutions and in the broader policy discussions relevant to research universities.

AAUDE maintains a data warehouse as a resource for its member representatives. Information is exchanged under explicit confidential data sharing-guidelines, as topics range from public to highly sensitive. For each exchange item, only institutions that provide data may use the data. Some exchanges include an expectation that institutional identities will be masked. AAUDE data is collected for institutional improvement purposes and is not available for academic research.

AAUDE and the AAU

Association of American Universities (AAU) institutions are all members of AAUDE. While AAUDE has regular communication with the AAU office in Washington, D.C. and the two organizations collaborate on their shared interests, AAUDE and AAU are formally independent entities.

The Mission

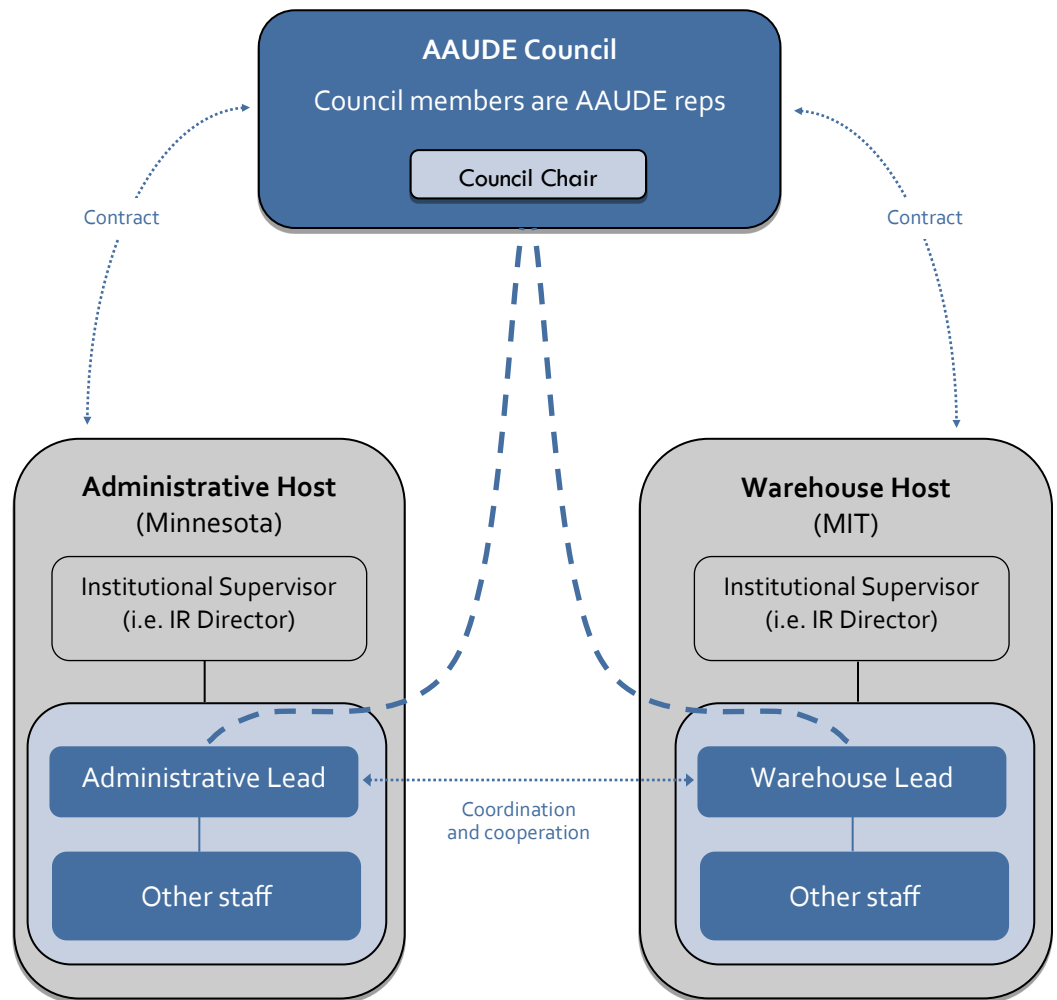
AAUDE is a volunteer organization which relies upon the active participation of its members to collect and make accessible useful information to inform decision-making within member institutions and in the broader policy discussions relevant to research universities.

To fulfill this mission, AAUDE's core function is the exchange of data/information of common interest including:

- A. The scheduled collection of exchange items as defined by the membership;
- B. The sharing of results of ad hoc inquiries and special studies; and
- C. The promotion of communication and collegiality among the membership.

Each of the exchange items has a caretaker who is responsible for collecting, cleaning, and compiling the data for use and sharing.

The Structure
Figure 1



Representatives

Each member institution designates a single **primary** representative—usually in institutional research or budget and planning offices—whose responsibility it is to coordinate access to and the appropriate use of AAUDE data on campus. The primary is an educational resource about AAUDE for campus leadership, and the voice for their institution on AAUDE business matters. A primary representative may appoint one or more **alternate** representatives. The primary can also assign more limited warehouse data access to individuals at their institution.

Volunteers

AAUDE is a volunteer organization that relies upon the active participation of its members. Member volunteers serve in many capacities, including **exchange item caretakers**, members of the Annual Meeting Planning (AMP), ad hoc committee members, and meeting hosts. The organization could not function without volunteers.

Council

AAUDE's governance body is referred to as **AAUDE Council**. The Council provides strategic direction for the organization and oversight of AAUDE's relationship with partner institutions and other organizations. Council consists of six regular members who serve three year terms and *ex-officio* members such as AAUDE staff and the Treasurer. Council members are selected by a Nominations Committee and approved by the membership.

Staff

AAUDE membership dues support contracts with some of our member institutions that employ staff dedicated to the work of AAUDE (see figure 1, left). The Administrative Host of AAUDE is currently the University of Minnesota. The AAUDE data warehouse has been hosted at MIT since its creation. The AAUDE website is hosted by the University of Illinois.



Resources

Colleagues

The exchange of information we enjoy has been made possible by the cultivation of mutual trust, collaborative relationships, and a service orientation. AAUDE colleagues are generally very willing to help one another through the listserv, through targeted email or phone calls, and at the annual meeting. Many *ad hoc* queries flow through the listserv.

Website

The AAUDE website includes additional documentation about the organization (such as a member handbook), technical instructions (such as how to set up your ODBC client to access the warehouse), and the exchange items (including definitions and caretaker contact information). *Ad hoc* queries made on the listserv are also catalogued and archived on the website.

Warehouse

The AAUDE data warehouse at MIT is a secure home for much of the data exchanged through AAUDE. In addition, the warehouse provides convenient access to many public data sources like IPEDS and the NSF HERD survey.

Tableau Server

The Tableau server at MIT hosts many workbooks that connect to AAUDE exchange items for your convenience. Warehouse users with Tableau Desktop who are interested in customizing the reports can use those reports as a starting point.

Selected Data Exchange Items

At the discipline level:

- Faculty salaries
- Faculty demographics
- Graduate assistant stipends
- Degree completions
- Student enrollment
- Postdoctoral fellows
- Research expenditures
- Undergraduate time-to-degree
- PhD time-to-degree
- Faculty surveys

At the institutional level:

- Faculty salaries
- Faculty and staff demographics
- Student enrollment by demographics
- Retention and graduation rates
- Tuition and required fees
- Profile of incoming freshmen
- Enrollment by student level
- Administrative compensation
- Source of institutional income
- Expenditures by major category
- US News rankings and supporting data
- Cost of living
- Current Developments

And many *ad hoc* queries!

Looking for more help?

- Warehouse questions: aaude-help@mit.edu
- Administrative questions: aaude@umn.edu

